

ProVenger Tip Disassembly Guide



A Premier Farnell Company

ProVenger Tip Disassembly



ProVenger Tip Disassembly

Required Tools

- 1/8" straight screwdriver
- 1/4" or 3/8" straight screwdriver
- 1/8" Allen Wrench
- 5/32" Allen Wrench



NOZZLE DISASSEMBLY

- Remove the Screw Cam.
- The CE version of the nozzle has a spring & detent ball under the screw cam.
- Pull off the pattern sleeve assembly.



NOZZLE DISASSEMBLY

- Remove the discharge key by holding the nozzle with the key downward and tapping the nozzle against your hand or a work surface. This will cause the key to slide out.



NOZZLE DISASSEMBLY

- Use the 5/32" Allen wrench to remove the screw holding on the baffle.
- Make sure to retain any shims that may be under the baffle.



NOZZLE DISASSEMBLY

- Use the small screwdriver blade to start the retaining ring out of its groove
- Tip: The retaining ring is easy to remove if it is curled up as shown in the picture, rather than trying to remove the entire ring over the nozzle body.



NOZZLE DISASSEMBLY

- Using the 1/8" Allan wrench, remove the Cam Axle.
- At this point the detent ball & spring between the nozzle body & gallonage selector ring will be free. Retain these while removing the selector ring.



NOZZLE DISASSEMBLY

- Removal of the selector ring will expose the cam rollers.
- Remove both cam rollers before attempting to pull the discharge tube out of the nozzle body.



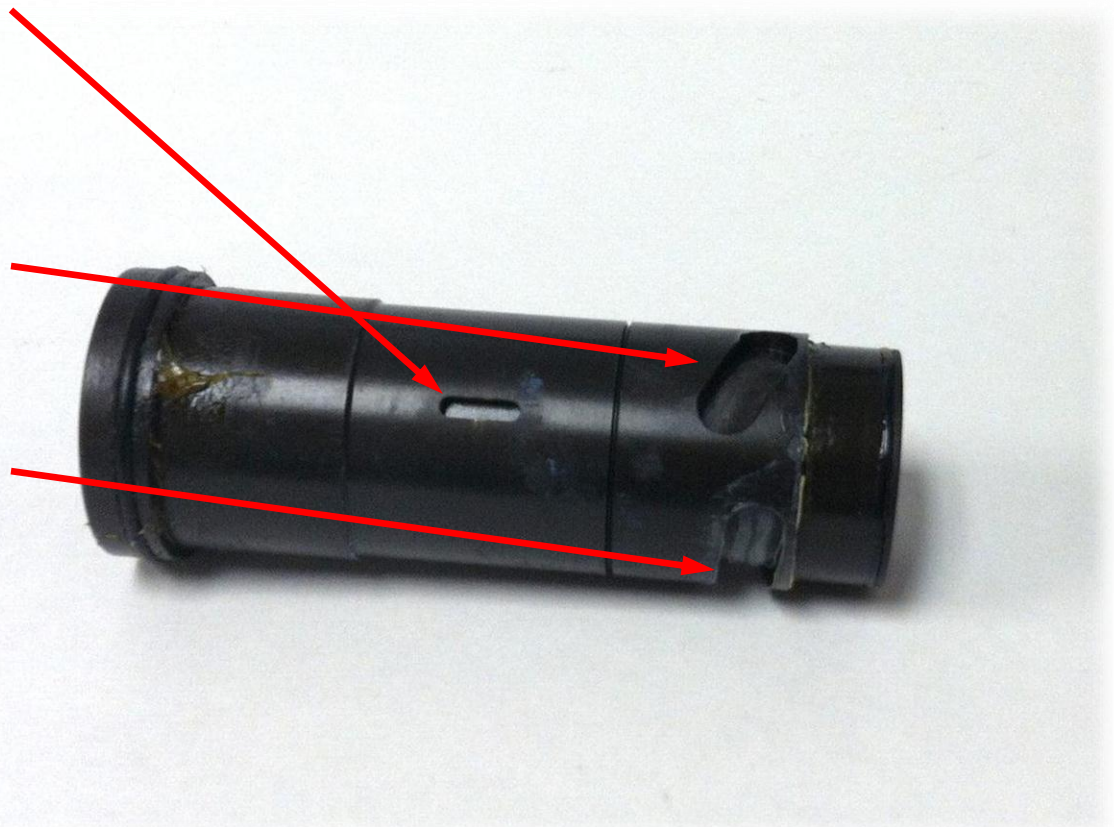
NOZZLE DISASSEMBLY

- With the discharge tube removed, disassembly of the nozzle tip is now complete.
- The baffle stem & spider are removed through the rear of the nozzle and are not covered in this guide.



NOZZLE ASSEMBLY

- Before reinstalling the discharge tube, note the position of the two cam grooves and the key slots.
- Groove #1 (short groove) is used for the fixed gallonage nozzles.
- Groove #2 (long groove) is used for the selectable gallonage nozzles.



NOZZLE ASSEMBLY

- The nozzle used for this guide is a selectable gallonage version, so the appropriate cam groove is lined up with the slot before locating the slot for the discharge key on the opposite side of the nozzle & sliding the key back into place.



NOZZLE ASSEMBLY

- Replace both cam rollers. The thinner one goes in first & fits into the groove in the discharge tube.



NOZZLE ASSEMBLY

- Replace the selector ring (detent ball & spring included) back onto the nozzle. Downward pressure on the ring may be needed to align the hole for the Cam Axle.
- Install the Cam Axle to lock the selector ring in place.



NOZZLE ASSEMBLY

- Reinstall the baffle and any shims that are used on the nozzle.
- Reinstall the retaining ring. You may need to push the gallonage selector ring downward to completely seat the retaining ring.



NOZZLE ASSEMBLY

- Slide the pattern sleeve assembly back over the nozzle and reinstall the Screw Cam.
- Test the nozzle to make sure the pattern sleeve & the gallonage selector ring operate properly and over their full range of movement



THANK YOU!

- This concludes the tip teardown & reassembly of the ProVenger nozzle from Akron Brass.
- If you have additional questions about this or other products, visit us on the web at AkronBrass.com or contact our technical support group at TechServ@AkronBrass.com.